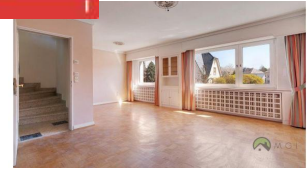


# A VENDRE



Energy index



## Maison mitoyenne

- Bedroom(s) : 4
- Surface : 170.00 m<sup>2</sup>
- Availability : immediately
- Reference : 1224
- Year of constr. : 1968
- Plot size : 250.00 ares

**Price :**  
**1.325.000 euros**

**Surface :**  
**170.00 m<sup>2</sup>**

**Isolation index :**  
**h**

A lovely four storey detached townhouse located in the heart of Mamer.

It belongs to one of the most expensive city of Luxembourg. Mamer is near Bertrange, Strassen and Luxembourg City.

Amenities: shops, highways, European schools, schools (kinneksbond), nurseries, buses, etc.

Property is composed as follows:

Ground floor: shower, toilet, garage, cellar

Floor 1: kitchen, living-room, balcony, garden

Floor 2: 3 bedrooms, bathroom, toilet

Attic: 2 bedrooms or hobby room

Land 225sqm

House surface: 170 sqm



**MGI**

10, Boulevard Royal  
L-2449 Luxembourg  
+352 26 10 20 51

# A VENDRE

For any viewing, please feel free to contact Murielle Grillo by phone +352621375725 or by email: [murielle@mgil.lu](mailto:murielle@mgil.lu)



**MGI**

10, Boulevard Royal  
L-2449 Luxembourg  
**+352 26 10 20 51**

---